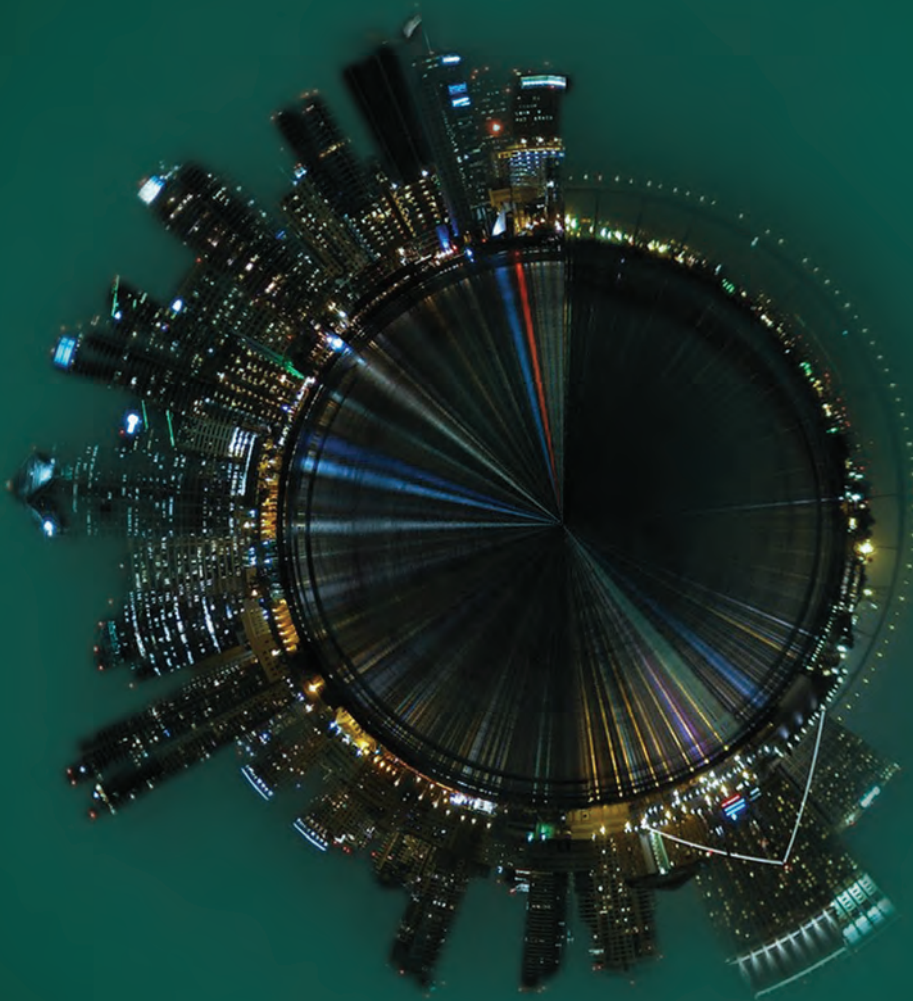


OPTIKON™
Man and Technology

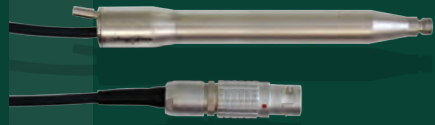
DESIGNED AND
MANUFACTURED
IN ITALY



ACHIEVE YOUR VISION.

Accessories for
R-EVOLUTION
Assistant *Minimal Stress*
Pulsar² ESP *Minimal Stress*

HANDPIECE



113101 Phaco handpiece "Slim 4"



113107 Six crystals phaco handpiece "Six"

SLEEVES



113301 Silicone sleeve for 3.2 mm incision*
(3 pcs)



113308 Silicone sleeve for 2.8 mm incision*
(3 pcs)



113307 Silicone sleeve for 2.3 mm incision*
(3 pcs)

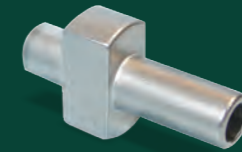


113309 Silicone sleeve for 1.8 mm incision*
(3 pcs)

FORCEPS



116006 Capsulorhexis forceps



113402 Phaco tip wrench

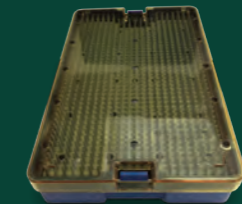


191004 KISS (Kawano Irrigation Surge Suppressor), single-use (20 pcs)

ACCESSORIES



116001 Test chamber (2 pcs)



116003 Sterilization tray 25x15x3.8 cm

Phacoemulsification

* Recommended Incision Size

TIPS



| | | | | | |
|------------------------|--------|--------|--------|--------|--------|
| 19G standard Phaco tip | | | | | |
| INC* | 5° | 15° | 30° | 45° | Sleeve |
| 3.2 | 113201 | 113202 | 113203 | 113204 | 113301 |



| | | |
|---|--------|--------|
| 19G Bordin "High Followability" Phaco tip | | |
| INC* | | Sleeve |
| 3.2 | 113232 | 113301 |



| | | | | | |
|------------------------|--------|--------|--------|--------|--------|
| 20G standard Phaco tip | | | | | |
| INC* | 5° | 15° | 30° | 45° | Sleeve |
| 2.8 | 113234 | 113205 | 113206 | 113207 | 113308 |



| | | | | |
|------------------------|--------|--------|--------|--------|
| 21G standard Phaco tip | | | | |
| INC* | 5° | 15° | 30° | Sleeve |
| 2.3 | 113235 | 113236 | 113237 | 113307 |



| | | |
|-------------------------|--------|--------|
| 19G biconical Phaco tip | | |
| INC* | 15° | Sleeve |
| 3.2 | 113228 | 113301 |



113217 Pars Plana Phaco tip



| | | |
|-------------------------|--------|--------|
| 20G biconical Phaco tip | | |
| INC* | 15° | Sleeve |
| 2.8 | 113230 | 113308 |



| | | | |
|-------------------------|--------|--------|--|
| 21G biconical Phaco tip | | | |
| INC* | 15° | Sleeve | |
| 2.3 | 113233 | 113307 | |



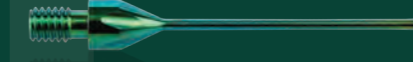
| | | |
|---------------------------------|--------|--------|
| 19G pezzola diaphragm Phaco tip | | |
| INC* | 30° | Sleeve |
| 3.2 | 113218 | 113301 |



| | | | |
|--------------------------------------|--------|--------|---------------------------|
| 20G diaphragm Phaco tip for bimanual | | | |
| INC* | 15° | 30° | Sleeve |
| 1.5 | 113220 | 113221 | No sleeve; bimanual phaco |



| | | |
|---|--------|--------|
| 20G Bordin "High Followability" Phaco tip | | |
| INC* | | Sleeve |
| 2.8 | 113229 | 113308 |



| | | |
|-------------------------|--------|--------|
| 22G biconical Phaco tip | | |
| INC* | 15° | Sleeve |
| 1.8 | 113238 | 113309 |

Phacoemulsification

* Recommended Incision Size: mm.

CANNULAS



19G I/A cannula with silicone sleeve

| | | |
|----------|----------|--------|
| Straight | 3.2 INC* | 114201 |
| Angled | 3.2 INC* | 114203 |



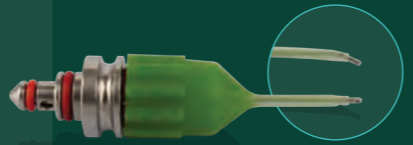
20G I/A cannula with silicone sleeve

| | | |
|----------|----------|--------|
| Straight | 2.8 INC* | 114216 |
| Angled | 2.8 INC* | 114217 |



21G I/A cannula with silicone sleeve

| | | |
|----------|----------|--------|
| Straight | 2.3 INC* | 114218 |
| Angled | 2.3 INC* | 114219 |



22G I/A cannula with silicone sleeve

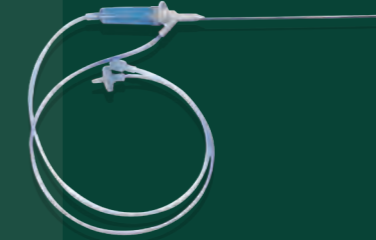
| | | |
|----------|----------|--------|
| Straight | 1.8 INC* | 114222 |
| Angled | 1.8 INC* | 114223 |

HANDPIECES



114101 I/A handpiece, long barrel

I/A KIT



190700 Air controlled irrigation device, single-use (5 pcs)



191001 Minimal IOP forced irrigation Kit, single-use (10 pcs)



192703 I/A Kit "EasySys Hi-Vac" for Assistant and Pulsar2Esp, single-use (10 pcs)

192704 I/A Kit "EasySys Hi-Vac" for R-Evolution and R-Evolution CR, single-use (10 pcs)

I/A

* Recommended Incision Size: mm.



192304 Anterior vitreous cutter, single-use (5 pcs)



192301 20G vitreous cutter "Opti-Vit", single-use (5 pcs)



192320 20G microscissors single-use, 45°



124006 19/20G scleral plug with holder (4 pcs)



192120 20G soft tip cannula, single-use (10 pcs)

192130 20G blunt tip cannula, single-use (10 pcs)

FIBER OPTICS



192803 20G standard multi-port endoillumination probe, single-use (5 pcs)

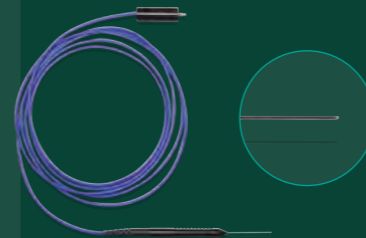


192806 20G wide angle multi-port endoillumination probe, single-use (5 pcs)

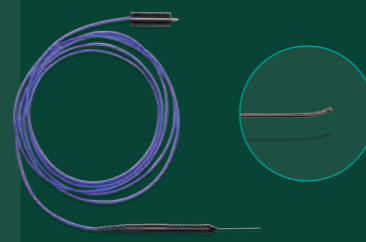


192815 20G shielded wide angle multi-port endoillumination probe, single-use (5 pcs)

ENDOLASER PROBES



SMA-S 20G straight tip NA 0.22, single-use (5 pcs)



SMA-A 20G angled tip NA 0.22, single-use (5 pcs)

IRRIGATION SYSTEM



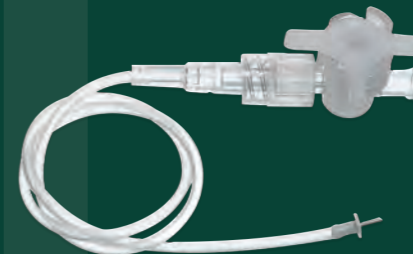
124001 20G scleral infusion cannula, angled, 3 mm

124002 20G scleral infusion cannula, angled, 4 mm

124003 20G scleral infusion cannula, angled, 6 mm



129008 Aspiration handpiece



192521 20G scleral infusion cannula/silicone tube/stopcock, single-use (10 pcs)

MISCELLANEA



128905 Two-way multi-port adapter**



192804 18G multi-port Trocar with endoillumination / irrigation



192805 20G multi-port Trocar with endoillumination

RETINAL SURGERY 20G

Vitreotomy

** Suggested for Assistant and Pulsar² ESP



192313 23G dual blade vitreous cutter "Opti-Vit Twedge", single-use (5 pcs)



192303 23G vitreous cutter "Opti-Vit", single-use (5 pcs)



192323 23G microscissors single-use, 45°



192123 23G soft tip cannula, single-use (10 pcs)

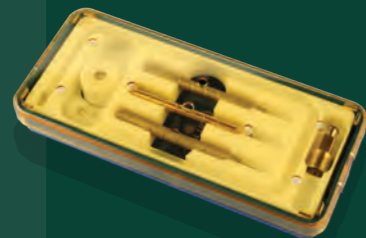
192133 23G blunt tip cannula, single-use (10 pcs)



192223 23G valved Trocar Kit, one step, single-use (10 pcs)



192202 23G Trocar Kit, one-step, single-use (10 pcs)



129014 23G Trocar Kit
124013 Reusable infusion tube for 23G Kit (3 pcs) for ref. 129014

FIBER OPTICS



192807 23G standard multi-port endoillumination probe, single-use (5 pcs)

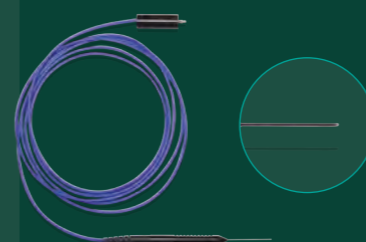


192809 23G wide angle multi-port endoillumination probe, single-use (5 pcs)

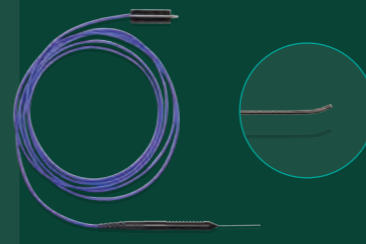


192816 23G shielded wide angle multi-port endoillumination probe, single-use (5 pcs)

ENDOLASER PROBES



SMA-23-S 23G straight tip NA 0.22, single-use (5 pcs)



SMA-23-A 23G angled tip NA 0.22, single-use (5 pcs)

TRANS-CONJUNCTIVAL INSTRUMENTS



123011 23G serrated jaw microforceps



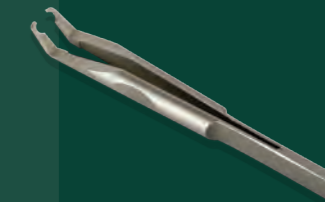
123012 23G end-gripping microforceps



124014 23G angled pic for scleral guides



129011 23G aspiration cannula



129016 Forceps for 23G scleral guides/plugs



129017 Pressure plate for conjunctiva

RETINAL SURGERY 23G

Vitreotomy



192315 25G dual blade vitreous cutter "Opti-Vit Twedge", single-use (5 pcs)



192302 25G vitreous cutter "Opti-Vit", single-use (5 pcs)

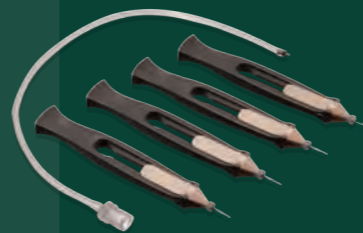


192125 25G soft tip cannula, single-use (10 pcs)

192135 25G blunt tip cannula, single-use (10 pcs)



192225 25G valved Trocar kit, one step, single-use (10 pcs)

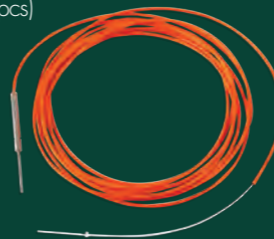


192201 25G valved Trocar Kit, one step, single-use (5 pcs)

FIBER OPTICS

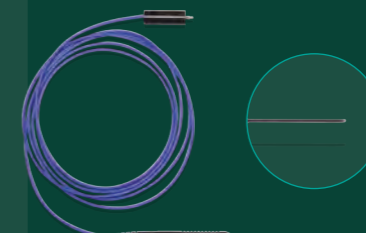


192808 25G standard multi-port endoillumination probe, single-use (5 pcs)

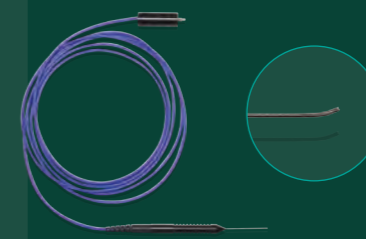


192817 25G chandelier with adjustable ring multi-port (5 pcs)

ENDOLASER PROBES



SMA-25-S 25G straight tip NA 0.22, single-use (5 pcs)

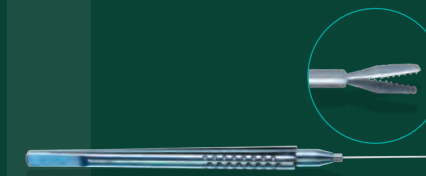


SMA-25-A 25G angled tip NA 0.22, single-use (5 pcs)

TRANS-CONJUNCTIVAL INSTRUMENTS



123013 25G end gripping microforceps



123014 25G serrated jaw microforceps



124015 25G angled pic for scleral guides

RETINAL SURGERY 25G

Vitreotomy



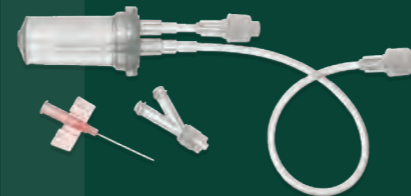
129006 Charles handpiece



129010 Reservoir for Charles Handpiece

192110 Backflush instrument, passive,
single-use (5 pcs)

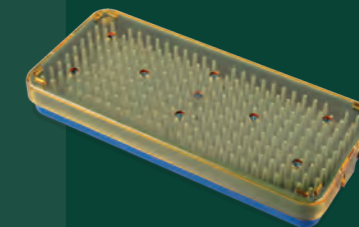
129019 Luer adapter for single-use cannula

192111 Backflush instrument, active,
single-use (5 pcs)SILICONE OIL
INJECTION/ REMOVAL192525 19G viscous fluid removal Kit,
single-use (10 pcs)

STERILE AIR INJECTION

192513 Air injection tube with filter,
single-use (5 pcs)192516 Adapter for simultaneous
connection Air/Minimal IOP,
single-use (10 pcs)**192514 Two-way stopcock, single-use
(10 pcs)

MISCELLANEA

129018 Sterilization tray for 23G pressure
plate/forceps 6.5x15.5x2 cm

Accessories

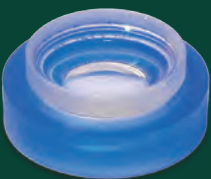
LENSES FOR VITRECTOMY



129003 Fundus lens for vitrectomy



129004 Periphery lens for vitrectomy



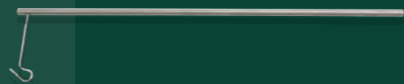
129005 Biconcave lens for fluid/gas exchange



181004 Equipped motorized cart (Pulsar² ESP)

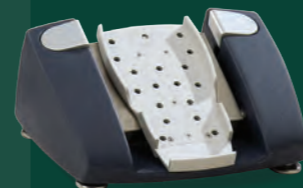


191602 Screen & Mayo drape, single-use (5 pcs) (Assistant and Pulsar² ESP)



181003 I.V. pole extension including blocking screw (Assistant and Pulsar² ESP)

MISCELLANEA



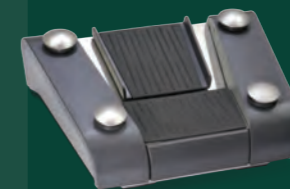
112103 Dual linear pedal (Assistant and Pulsar² ESP)



122006 Remote control (Assistant and Pulsar² ESP)



111006 Eclipse Video Overlay System (Assistant and Pulsar² ESP)



112104 Bluetooth dual linear pedal (R-Evolution and R-Evolution CR)



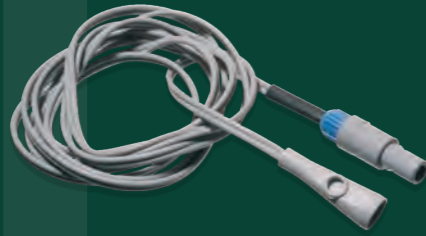
122007 Remote control (R-Evolution and R-Evolution CR)



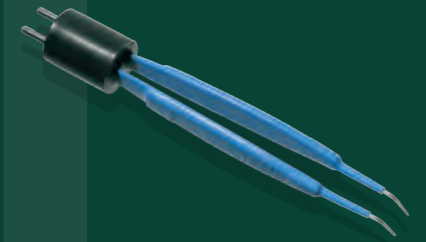
111008 "Eclipse HD" Video Overlay System (R-Evolution and R-Evolution CR)

Accessories

ESODIATHERMY



115101 Diathermy bipolar cable

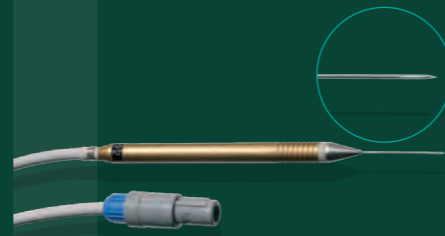


115301 Diathermy forceps

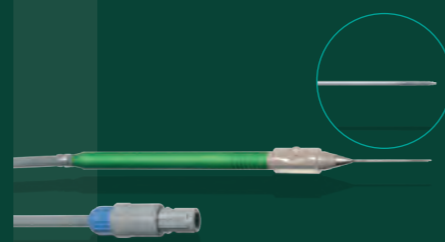


115302 Diathermy pencil eraser

ENDODIATHERMY



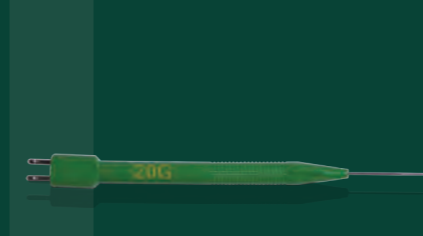
115303 Endodiathermy probe 20G



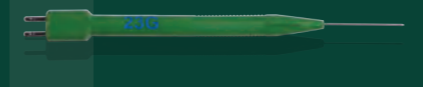
115305 Endodiathermy probe with reflux 19G



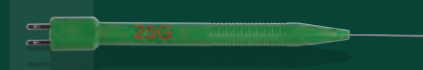
129007 Tube for endodiathermy probe (2 pcs)



192620 Endodiathermy probe 20G, single-use (5 pcs)



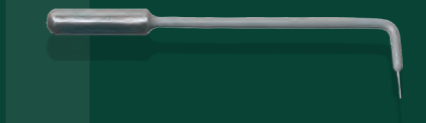
192623 Endodiathermy probe 23G, single-use (5 pcs)



192625 Endodiathermy probe 25G, single-use (5 pcs)



115103 Diathermy handle for subretinal drainage



115210 3 mm diathermy electrode for subretinal drainage

Diathermy

VITREO-RETINAL SURGERY

AMERICA

Argentina
Bolivia
Brazil
Canada
Chile
Colombia
Costa Rica
Cuba
Ecuador
Mexico
Paraguay
USA
Venezuela

AFRICA

Algeria
Egypt
Morocco
South Africa
Sudan
Tunisia

EUROPE

Austria
Belgium
Denmark
France
Germany
Greece
Italy
Netherlands
Poland
Portugal

United Kingdom
Czech Republic
Russia
Serbia
Slovakia
Spain
Switzerland
Turkey

MIDDLE EAST

Saudi Arabia
Bahrain
Jordan
Iran
Iraq
Israel
Lebanon
Pakistan
Syria
Yemen

ASIA

Bangladesh
China
South Korea
Philippines
Japan
Hong Kong
India
Indonesia
Nepal
Thailand
Taiwan
Vietnam



OPTIKON™
Man and Technology

OPTIKON 2000 S.p.A.

Via del Casale di Settebagni, 13
00138 Rome - Italy
www.optikon.com

CUSTOMER SERVICE

Rome office - Italy

Via del Casale di Settebagni, 13 - 00138 Rome
ph. +39 06 8888355 - fax +39 06 8888440
e-mail: sales@optikon.it

Distributed by: